
Installing the USB driver (MICRO/I)

- HG2G-5F, HG3G/4G

HG2G-S HG2G-5S **HG2G-5F** **HG3G** **HG4G** HG1F HG2F HG2S HG3F HG4F

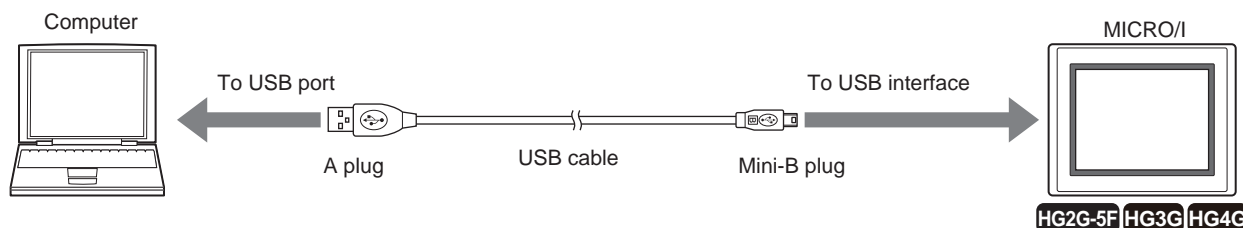


Before the MICRO/I can be connected to a computer, it is necessary to install either WindO/I-NV2 or the Downloader. If you connect MICRO/I to the computer before installing either driver, an error message will appear prompting you to install the driver software. In this case, clear the error and install either driver.

Windows 10, Windows 8, Windows 7

Follow these steps to install the HG2G-5F, HG3G/4G USB driver.

- 1 Connect the USB cable to the USB interface on the MICRO/I (with power supplied) and the USB port on the computer (computer should be on).



- 2 Call up the Device Manager.

- **Windows 10**

Type **Device Manager** in the Searchbox on the taskbar, and then select from the menu.

- **Windows 8**

Right Click on the **Start** screen and then click **All Apps**, **Control Panel**, and **Hardware and Sound**. In the **Hardware and Sound** dialog box, click **Device Manager**.

- **Windows 7**

Click **Start** - **Control Panel** - **System and Security** - **Device Manager**.

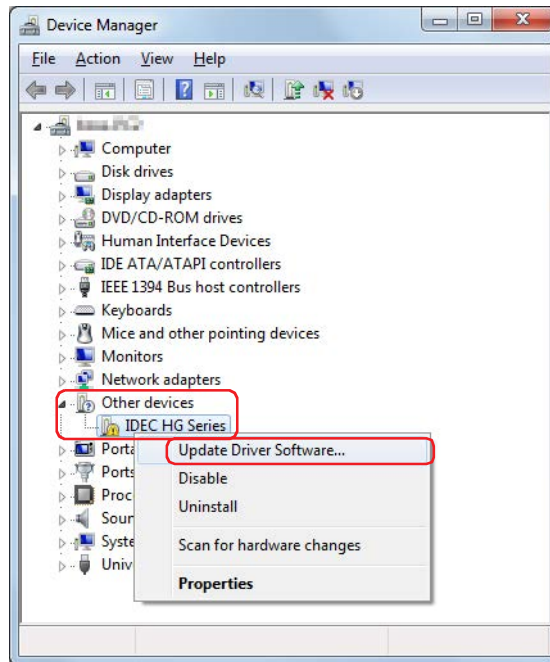
3 Open **Update Driver Software** dialog box.

■ **Windows 10**

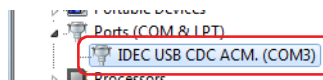
Right click on **USB Serial Device (COM)** under **Ports (COM & LPT)**, then click **Update Driver Software...**

■ **Windows 8, Windows 7**

Right Click on **IDEC HG Series** under **Other devices**, then click **Update Driver Software....**



If connecting the HG2G-5F or the HG3G/4G to a computer running Windows 10/8/7 32-bit edition and **IDEC HG Series** is not shown under **Other devices**, check **Ports (COM LPT)**. If **IDEC USB CDC ACM. (XXXX)** (XXXX is the port name) is shown, the USB driver is already installed.



4 Select how to search for driver software.

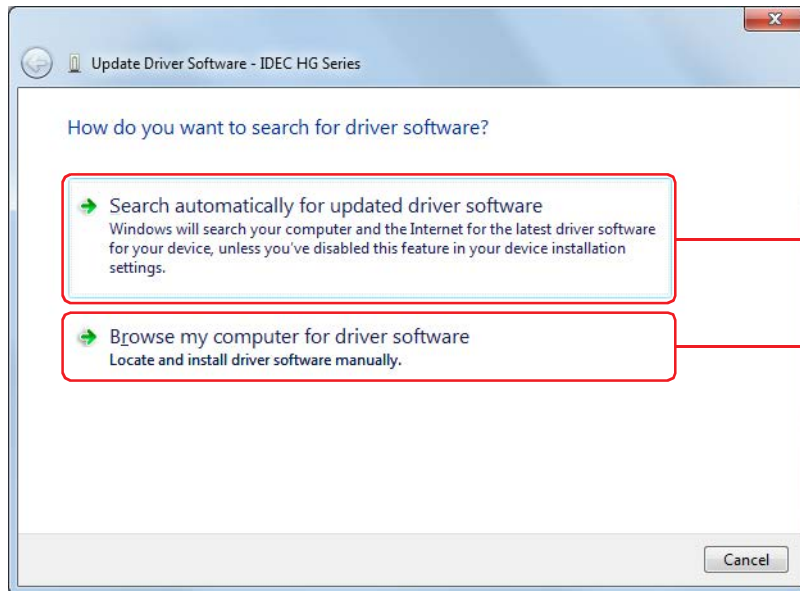
■ **Windows 10**

If using Windows 10, click **Browse my computer for driver software**.

■ **Windows 8, Windows 7**

Click **Browse my computer for driver software** if using the 64-bit edition of Windows 8/7 or **Search automatically for updated driver software** if using the 32-bit edition of Windows 8/7.

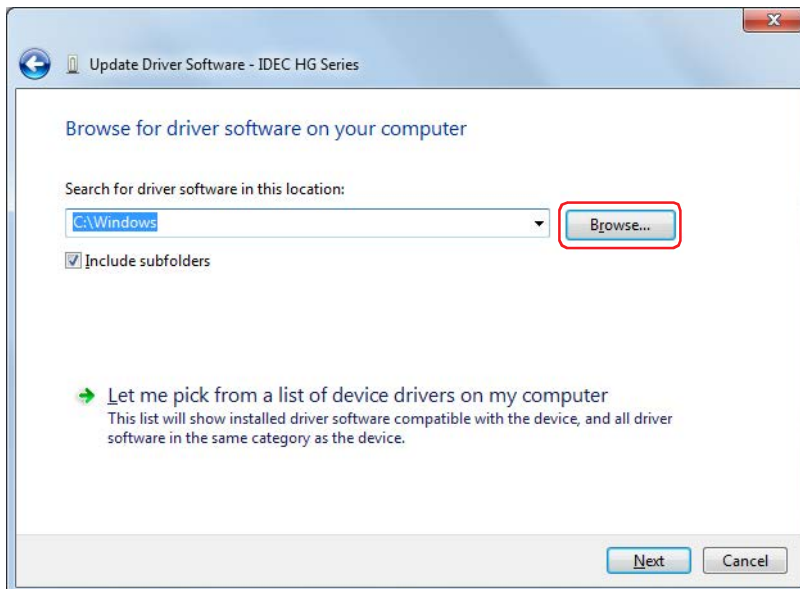
If using the 32-bit edition of Windows 8/7, go to step 8.



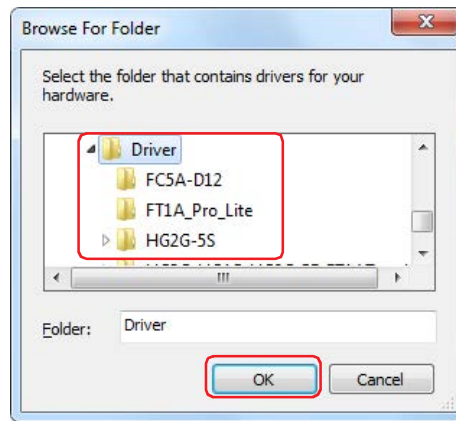
32-bit edition of Windows 8/7

32-bit and 64-bit edition of
Windows 10
64-bit edition of
Windows 8/7

5 Click **Browse...** next to **Search for driver software in this location:**

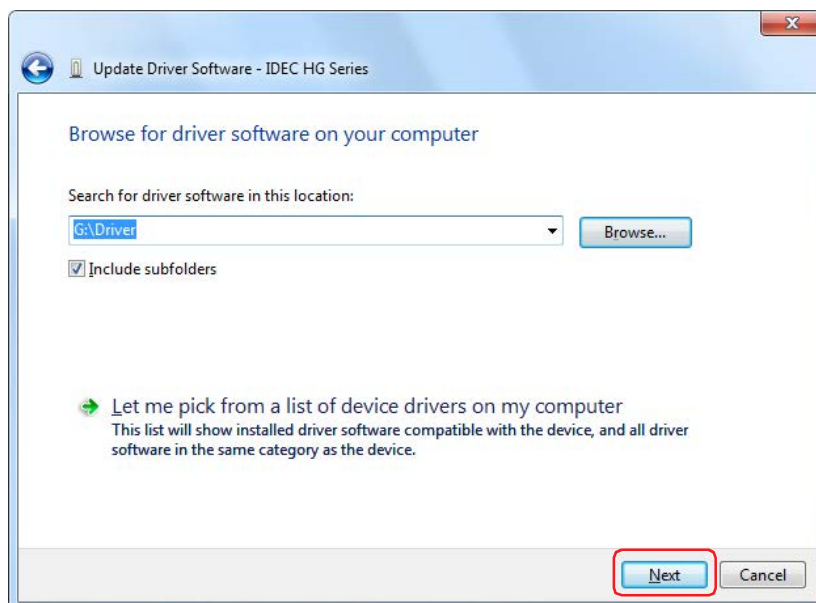


- 6 Specify the folder to save the USB driver and click **OK**.

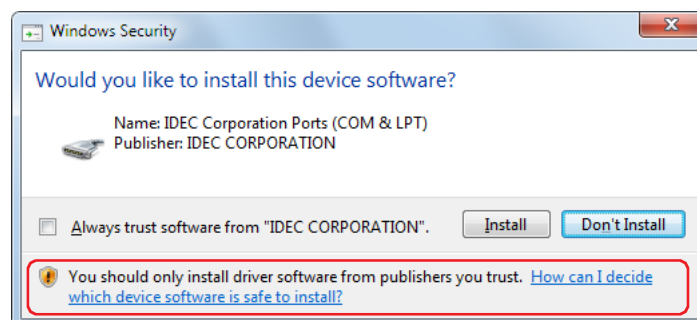


- The USB driver is located in driver folders on the Automation Organizer Disk (DVD-ROM).
- The USB driver may also be downloaded from the website (<http://www.idec.com/>).

- 7 Click **Next**.
If using the Windows 10/8, go to step 9.

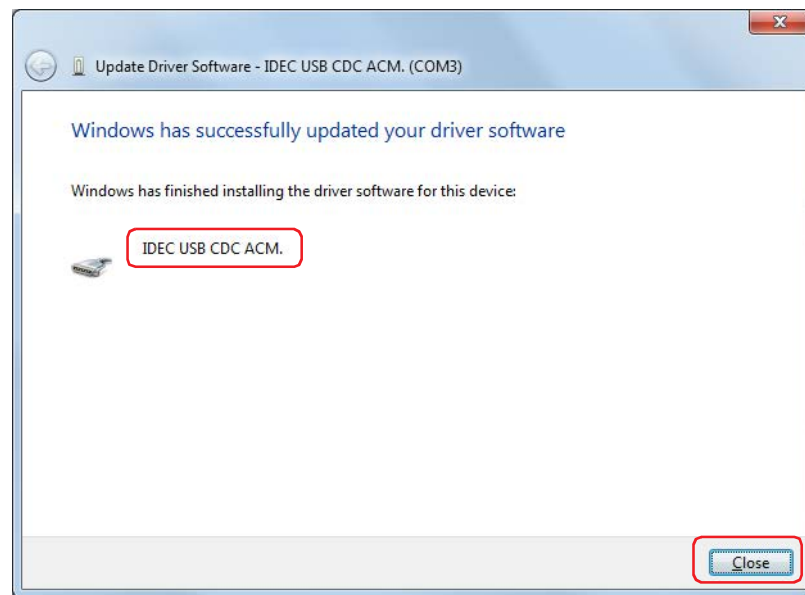


- 8 Click **Install**.
The USB driver installation begins.



9 Click **Close**.

IDEC USB CDC ACM. appears if the USB driver installs properly.



To uninstall the Windows 10/8/7 64-bit edition version of the USB driver for the HG2G-5F, HG3G/4G

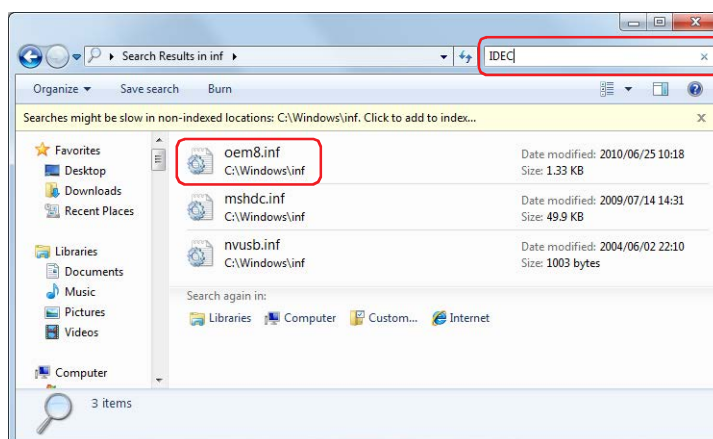
The Windows 10/8/7 64-bit edition version of the USB driver for the HG2G-5F, HG3G/4G cannot be completely uninstalled even if you delete the USB driver **IDEC USB CDC ACM.(XXXX)** (where XXXX is the port name) from the Device Manager. Follow these steps to delete all USB driver files to uninstall it completely, then reinstall it.

- 1 Launch Windows Explorer.



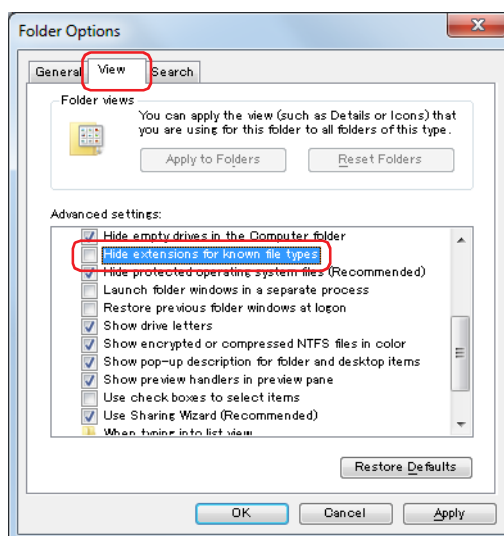
- 2 Click **Computer - C: - Windows - inf.**

- 3 Enter **IDEC** in the search box.
The file oem**.inf (** denotes a number) will appear.



If the file extension is not displayed, change the display settings as follows.

- (1) The **Folder Options** dialog box is displayed.
 - Windows 10/8
On the **View** menu, click **Options**.
 - Windows 7
Click **Organize - Folder and Search Options**.
- (2) On the **View** tab, deselect **Hide extensions for known file types**.



- (3) Click **OK**.
-

4 Delete oem**.inf.

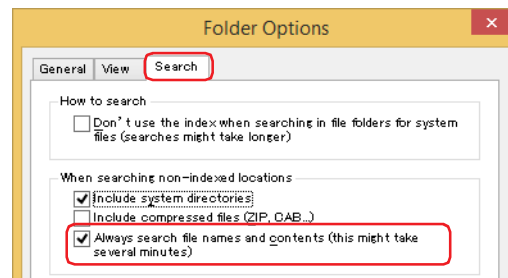
Right Click on oem**.inf and click **Delete** or press **Delete** on the keyboard.

The File access denied dialog box appears.



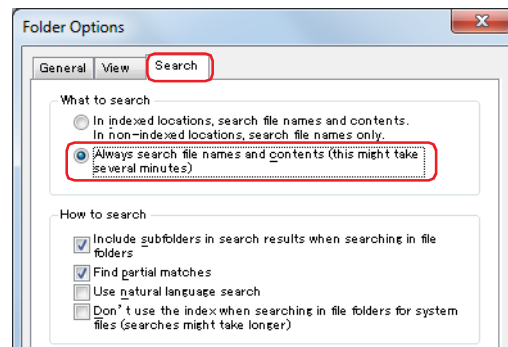
If Windows cannot find oem**.inf, change the settings as follows.

- (1) The **Folder Options** dialog box is displayed.
 - Windows 10/8
On the **View** menu, click **Options**.
 - Windows 7
Click **Organize - Folder and Search Options**.
- (2) Select the search method.
 - Windows 10/8
On the **Search** tab, click **Always search file names and contents** under **When searching non-indexed locations**.



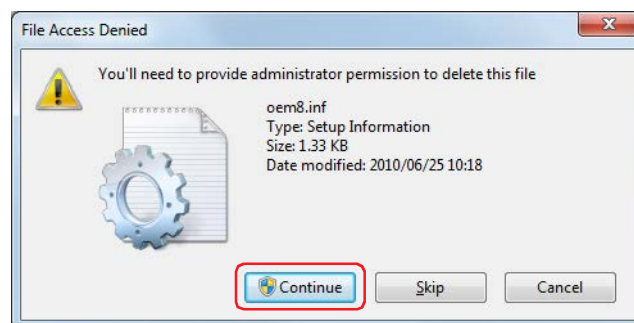
- Windows 7

On the **Search** tab, click **Always search file names and contents** under **What to search**.



- (3) Click **OK**.

5 Click **Continue**.

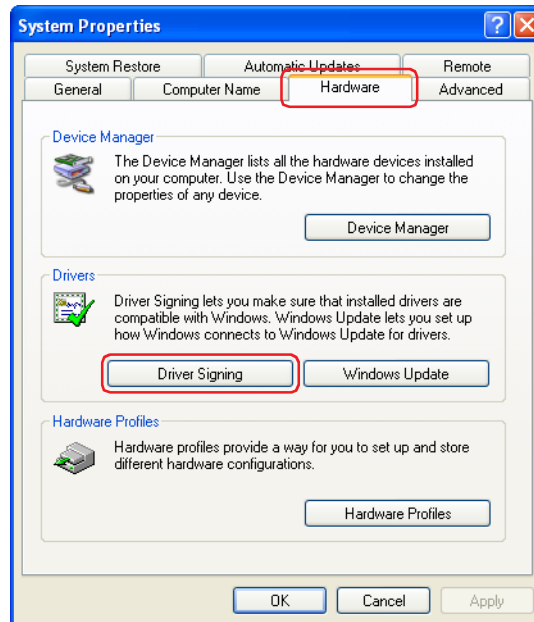


6 This will reinstall the USB driver.

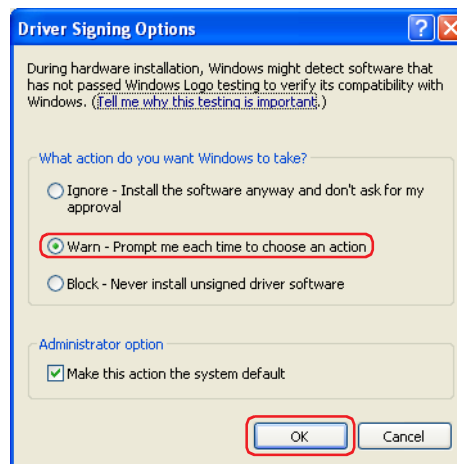
Changing driver signing options

If the USB driver installation stops before it is complete, follow these steps to check the driver signing options.


- 1 Click **Start - Control Panel - Performance and Maintenance - System**.
The **System Properties** dialog box is displayed.
- 2 Click **Driver Signing** on the **Hardware** tab.
The **Driver Signing Options** dialog box is displayed.



- 3 Select **Warn** under the label **What action do you want Windows to take?**, and click **OK**.
This brings you back to the **System Properties** dialog box.



If **Block** is selected, the **Hardware Installation** dialog box is not displayed and installation stops.

- 4 Click **OK** on the **System Properties** dialog box.
This brings you back to the Control Panel.
- 5 Click  (Close) on the Control Panel.



To reinstall the USB driver, disconnect the USB cable from the USB interface on the MICRO/I and from the USB port on the computer. Reinstall by referring to "Changing driver signing options".

● HG2G-5S

HG2G-S **HG2G-5S** HG2G-5F HG3G HG4G HG1F HG2F HG2S HG3F HG4F



Before you connect the HG2G-5S to the computer, you must install the HG2G-5S USB driver in advance.

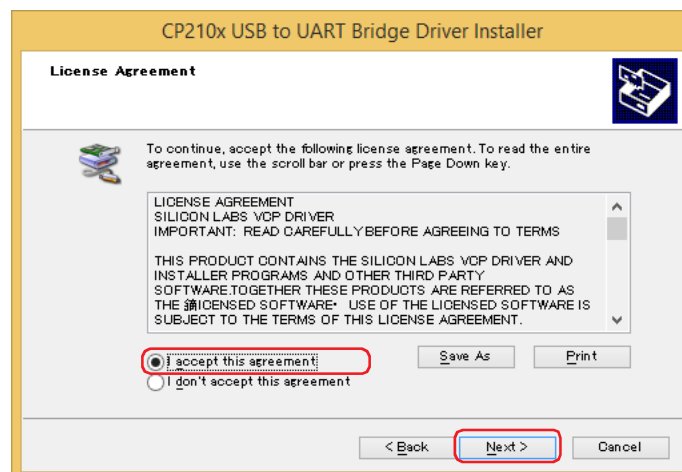
Follow these steps to install the HG2G-5S USB driver.

- 1 The HG2G-5S USB driver installation wizard will start when Automation Organizer installation is complete. Click **Next**.

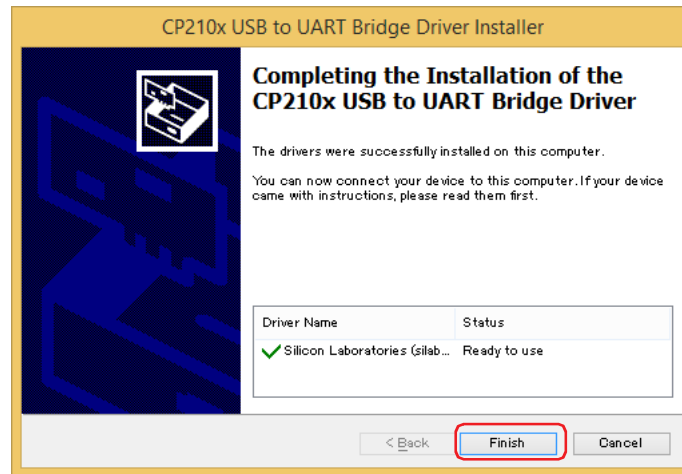


- If you stop the installation wizard before it installs the HG2G-5S USB driver, or to reinstall the driver, run the installation wizard with the following installer located on the Automation Organizer DVD (Ver. 2.0 or later).
Windows 10/8/7 64-bit edition: \Driver\HG2G-5S\CP210xVCPInstaller_x64.exe
Windows 10/8/7 32-bit edition: \Driver\HG2G-5S\CP210xVCPInstaller_x86.exe
- The USB driver may also be downloaded from the website (<http://www.idec.com/>).

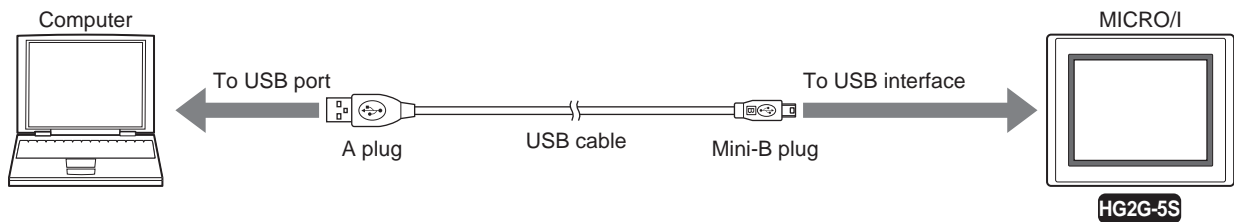
- 2 Read the license agreement carefully and if you agree to its terms, click **I accept this agreement**, and then click **Next**.



- 3 Click **Finish**.



- 4 Connect the USB cable to the USB interface on the HG2G-5S (with power supplied) and the USB port on the computer (computer should be on).



- 5 The USB driver installs automatically.

To uninstall the HG2G-5S USB driver

Follow these steps to uninstall the USB driver and then reinstall it.

1 Open the Programs uninstall window.

■ Windows 10

Right click on **Start** button and click on **Programs and Features**.

■ Windows 8

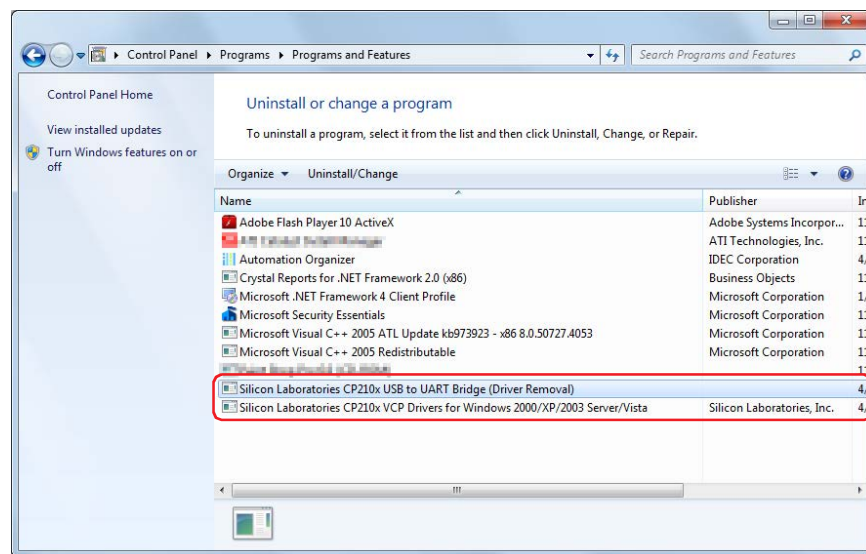
Right Click on the **Start** screen and then click **All Apps, Control Panel**, and **Uninstall a program**.

■ Windows 7

Click **Start**, **Control Panel**, and **Uninstall a program**.

2 Select the following items on the list of programs to uninstall and click **Uninstall/Change** (Windows 10/8/7).

- Silicon Laboratories CP210x USB to UART Bridge (Driver Removal)
- Silicon Laboratories CP210x VCP Drivers for Windows 2000/XP/2003 Server/Vista



3 Follow the instructions on the screen to uninstall the driver.

Complete step 1 through 3 for each item to uninstall.

4 Reinstall the USB driver. Refer to "HG2G-5S".

● HG2F

HG2G-S HG2G-5S HG2G-5F HG3G HG4G HG1F **HG2F** HG2S HG3F HG4F



Before the HG2F can be connected to a computer, it is necessary to install either WindO/I-NV2 or the Downloader. If you connect an HG2F to the computer before installing either driver, an error message will appear prompting you to install the driver software. In this case, clear the error and install either driver.

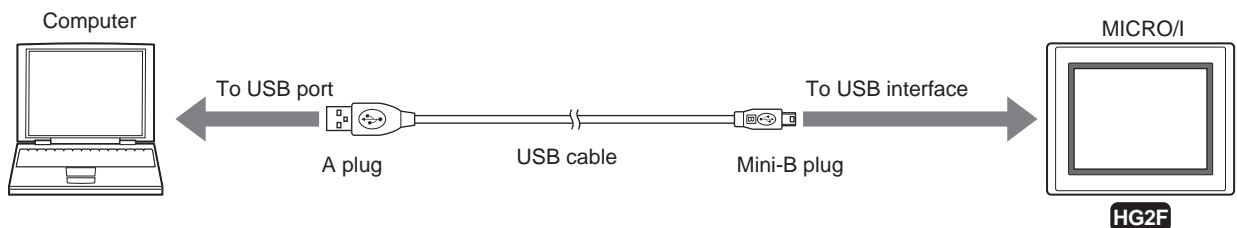
Windows 10, Windows 8



The USB interface on the HG2F supports only the 32-bit edition of Windows 10/8. It does not support the 64-bit edition.

Follow these steps to install the HG2F USB driver.

- 1 Connect the USB cable to the USB interface on the MICRO/I (with power supplied) and the USB port on the computer (computer should be on).



- 2 Call up the Device Manager.

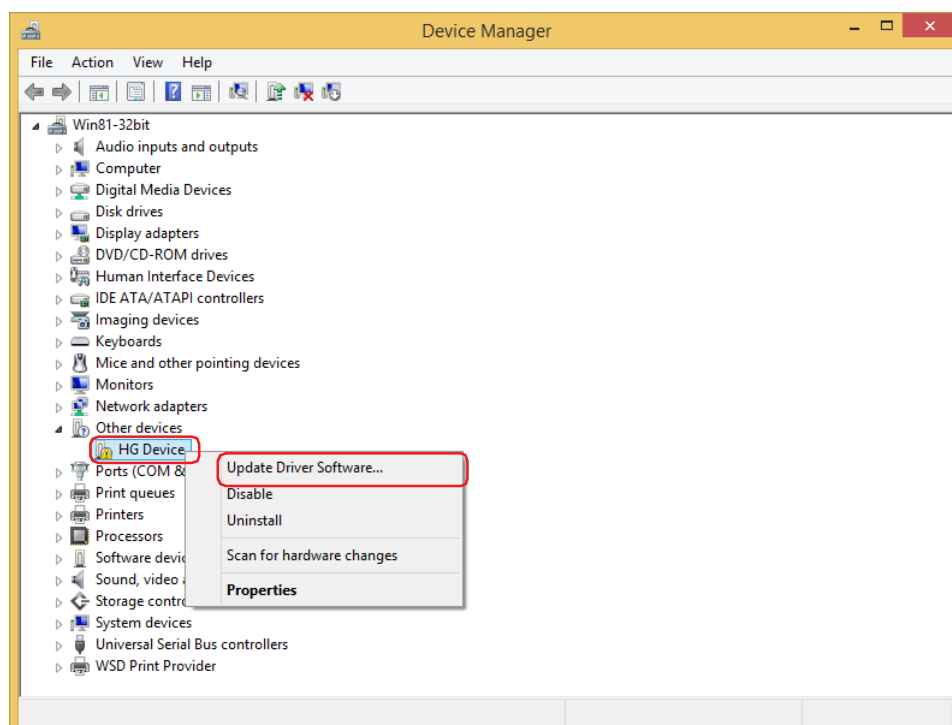
■ Windows 10

Type **Device Manager** in the Searchbox on the taskbar, and then select from the menu.

■ Windows 8

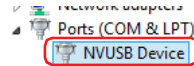
Right Click on the **Start** screen and then click **All apps**, **Control Panel**, and **Hardware and Sound**. In the **Hardware and Sound** dialog box, click **Device Manager**.

- 3 Right Click on **HG Device** under **Other devices**, then click **Update Driver Software...**

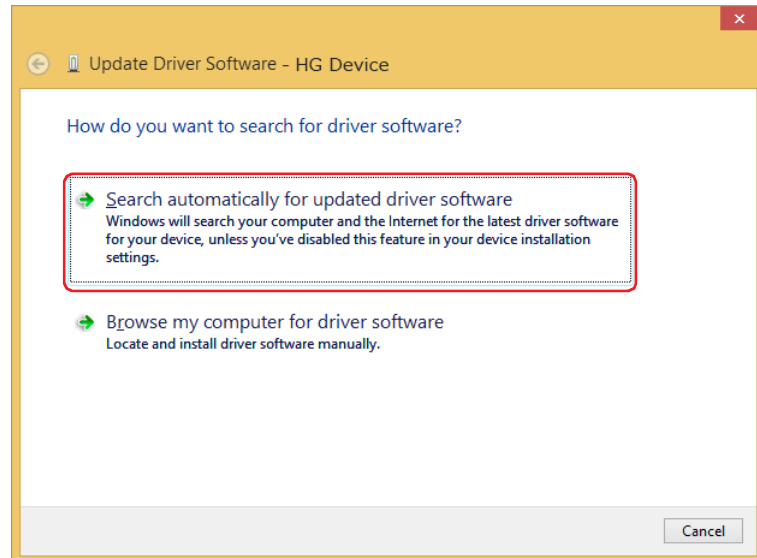




If connecting the HG2F to a computer running Windows 10/8 32-bit edition and **HG Device** is not shown under **Other devices**, check **Ports (COM LPT)**. If **NVUSB Device** is shown, the USB driver is already installed.



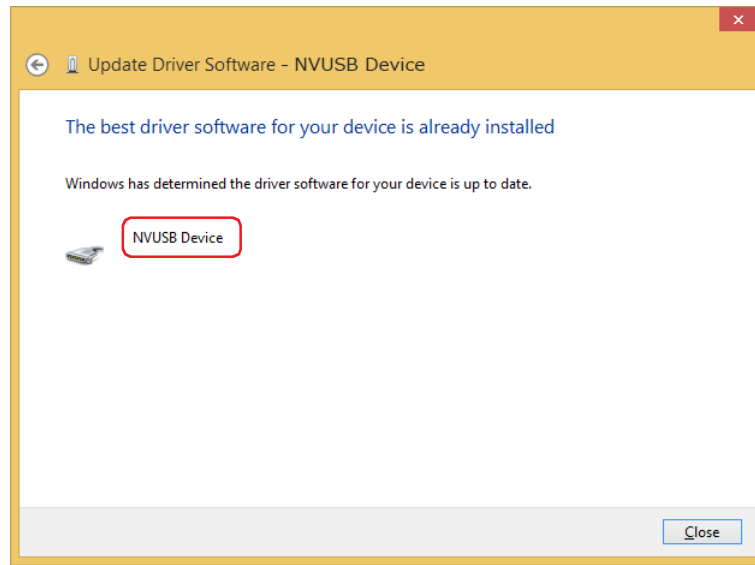
- 4 Click **Search automatically for updated driver software**.



- 5 Click **Install this driver software anyway**.
The USB driver installation begins.



- 6 Click **Close**.
NVUSB Device appears if the USB driver installs properly.



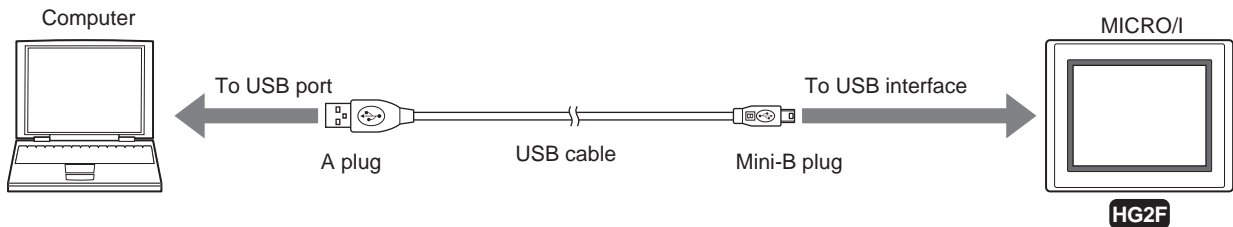
Windows 7



The USB interface on the HG2F supports only the 32-bit edition of Windows 7. It does not support the 64-bit edition.

Follow these steps to install the HG2F USB driver.

- 1 Connect the USB cable to the USB interface on the MICRO/I (with power supplied) and the USB port on the computer (computer should be on).



- 2 The USB driver will install automatically.
The installation is complete when **Device driver software installed successfully.** appears in the notification area.

Checking the USB Driver

HG2G-S HG2G-5S HG2G-5F HG3G HG4G HG1F HG2F HG2S HG3F HG4F

Follow these steps to confirm that the USB driver was installed properly, and that the computer recognizes MICRO/I correctly.

1 Call up the Device Manager.

■ **Windows 10**

Type **Device Manager** in the Searchbox on the taskbar, and then select from the menu.

■ **Windows 8**

Right Click on the **Start** screen and then click **All Apps, Control Panel**, and **Hardware and Sound**. In the **Hardware and Sound** dialog box, click **Device Manager**.

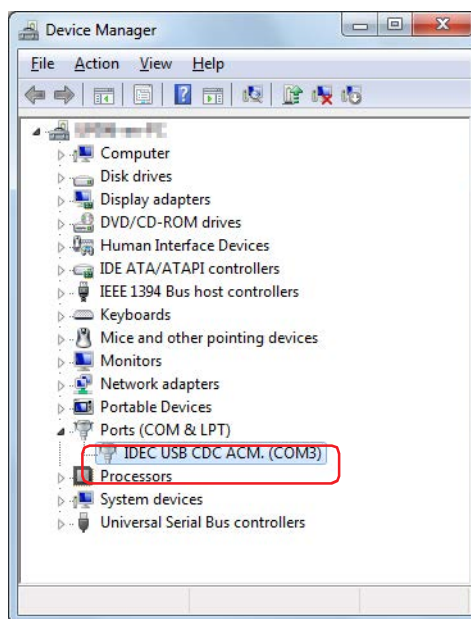
■ **Windows 7**

Click **Start, Control Panel, System and Security**, and then **Device Manager**.

2 Click **Ports (COM & LPT)**.

If the following device name is shown, the USB driver is already installed and the computer recognizes the MICRO/I.

- HG2G-5F, HG3G/4G: IDEC USB CDC ACM. (XXXX) (XXXX is the port name.)
- HG2G-5S: Silicon Labs CP210x USB to UART Bridge (XXXX) (XXXX is the port name.)
- HG2F: NVUSB Device



- The device name will disappear if the USB cable is disconnected or the MICRO/I power is turned off.
- When the MICRO/I power is turned on and the USB cable is connected, the words **Unknown Device** or a **"?"** may appear in place of the device name, indicating the computer may not be recognizing the USB driver correctly. Disconnect the USB cable and turn the MICRO/I power off. Then turn the MICRO/I power on again and connect the USB cable to check that the computer recognizes the USB driver. If the computer still does not recognize the USB driver, uninstall it from the Device Manager and reinstall it.

Installing the USB Driver (Smart AXIS Touch)

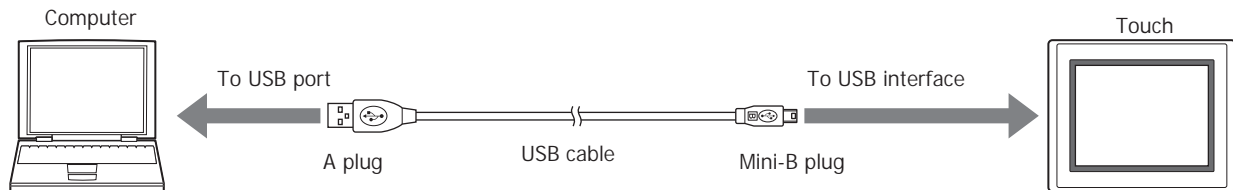


Before the Touch can be connected to a computer, it is necessary to install WindO/I-NV3. If you connect Touch to the computer before installing the driver, an error message will appear prompting you to install the driver software. In this case, clear the error and install the driver.

- Windows 10, Windows 8, Windows 7

Follow these steps to install the USB driver.

- 1 Connect the USB cable to the USB interface on the Touch (with power supplied) and the USB port on the computer (computer should be on).



- 2 Call up Device Manager.

- **Windows 10**

Type **Device Manager** in the Searchbox on the taskbar, and then select from the menu.

- **Windows 8**

Right Click on the **Start** screen and then click **All Apps**, **Control Panel**, and **Hardware and Sound**. In the **Hardware and Sound** dialog box, click **Device Manager**.

- **Windows 7**

Click the **Start** button, **Control Panel**, **System and Security**, and then **Device Manager**.

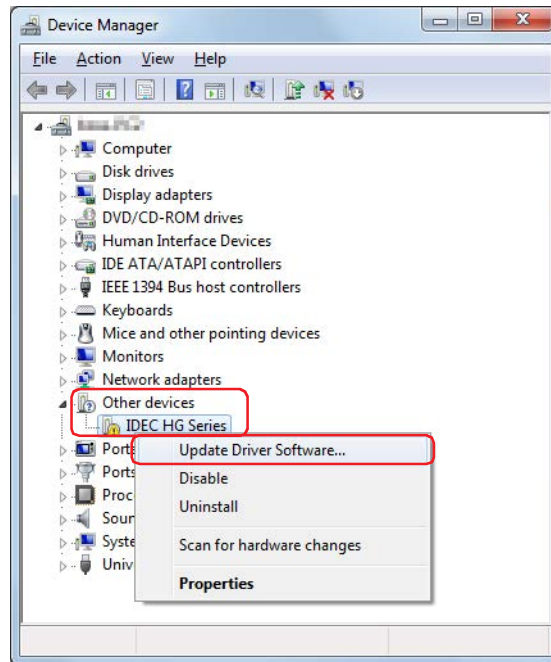
3 Open **Update Driver Software** dialog box.

■ **Windows 10**

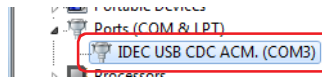
Right click on **USB Serial Device (COM)** under **Ports (COM & LPT)**, then click **Update Driver Software....**

■ **Windows 8, Windows 7**

Right Click on **IDEC HG Series** under **Other devices**, then click **Update Driver Software....**



If connecting the Touch to a computer running Windows 10/8/7 32-bit edition and **FT1A-Touch** is not shown under **Other devices**, check **Ports (COM LPT)**. If **IDEC USB CDC ACM. (XXXX)** (XXXX is the port name) is shown, the USB driver is already installed.



4 Choose how to search for driver software.

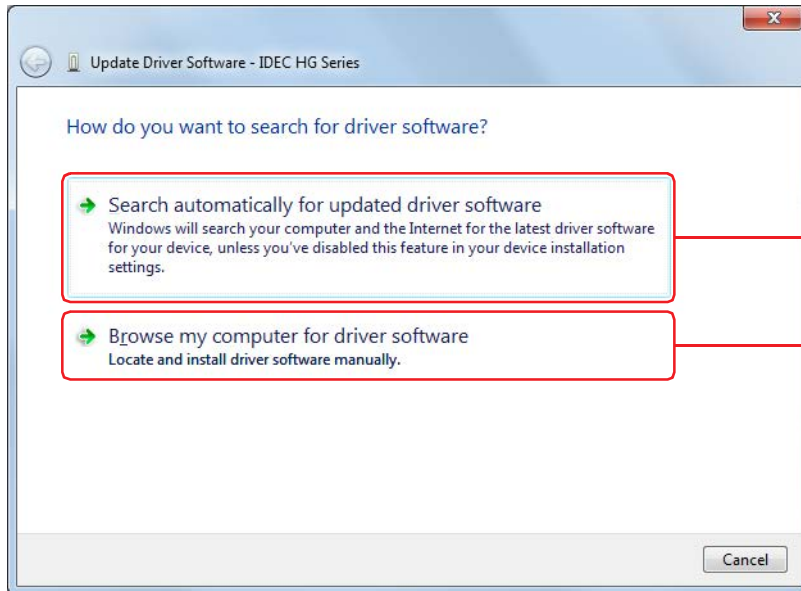
■ **Windows 10**

If using Windows 10, click **Browse my computer for driver software**.

■ **Windows 8, Windows 7**

Click **Browse my computer for driver software** if using the 64-bit edition of Windows 8/7 or **Search automatically for updated driver software** if using the 32-bit edition of Windows 8/7.

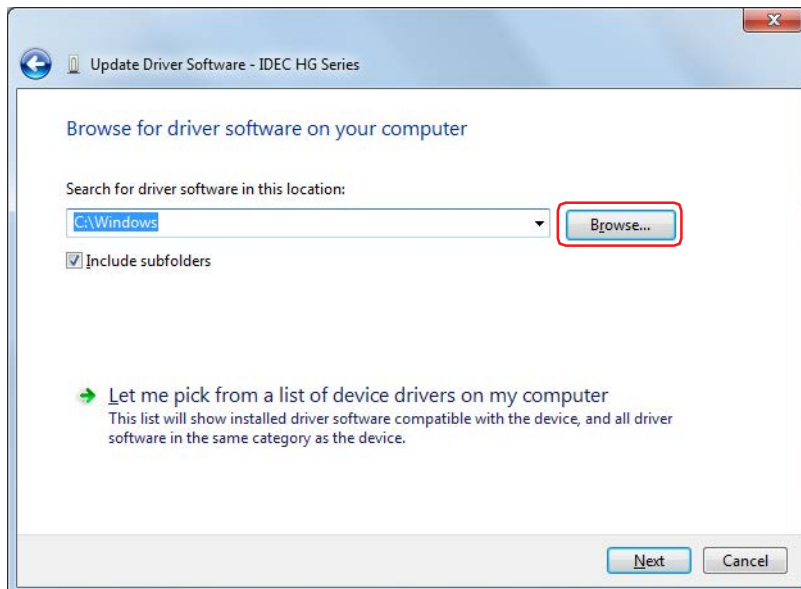
If using the 32-bit edition of Windows 8/7, go to step 8.



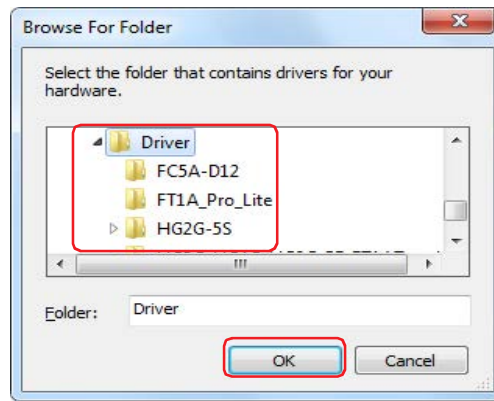
32-bit edition of Windows 8/7

32-bit and 64-bit edition of
Windows 10
64-bit edition of
Windows 8/7

5 Click **Browse...** next to **Search for driver software in this location:**

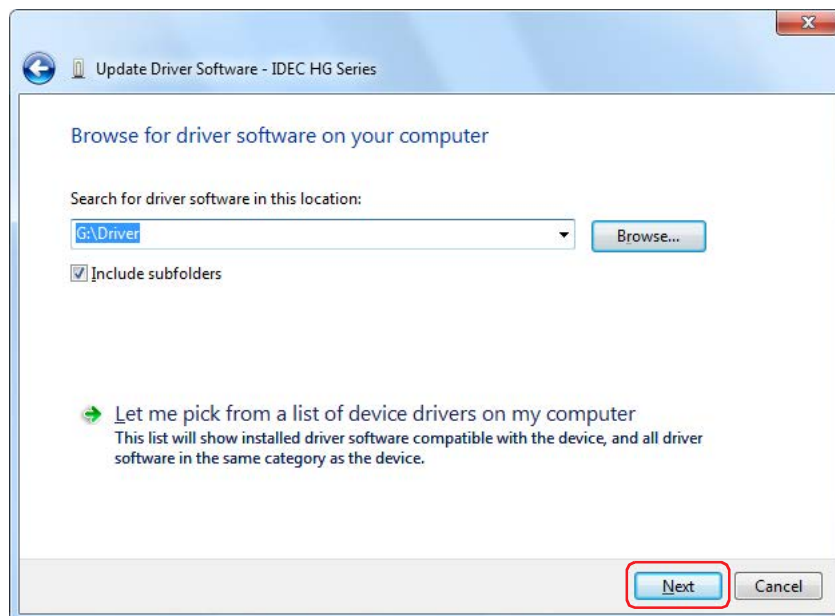


- 6 Specify the folder to save the USB driver, and then click **OK**.

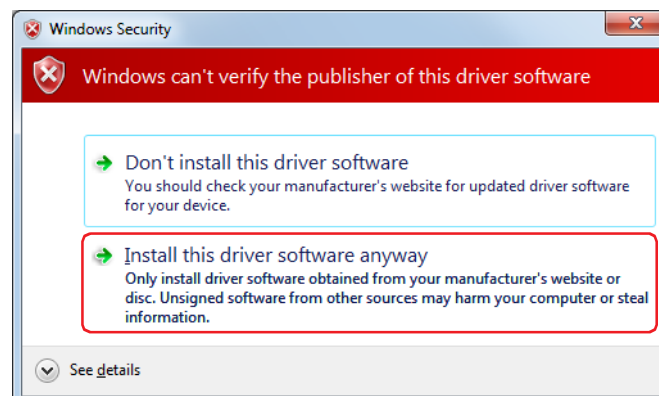


- The USB driver is located in driver folders on the Automation Organizer Disk (DVD-ROM).
- The USB driver may also be downloaded from the website (<http://www.idec.com/>).

- 7 Click **Next**.
If using the Windows 10/8, go to step 9.

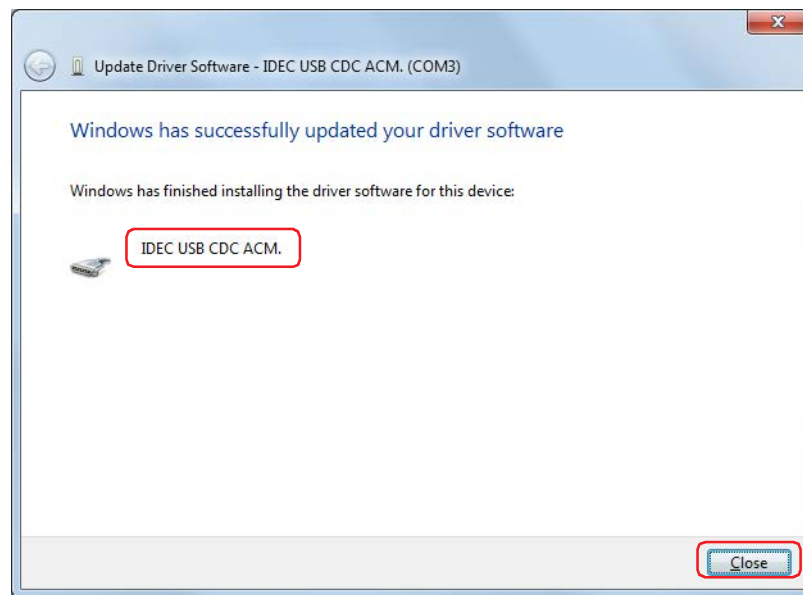


- 8 Click **Install this driver software anyway**.
The USB driver installation begins.



9 Click **Close**.

IDEC USB CDC ACM. appears if the USB driver installs properly.



To uninstall the Windows 10/8/7 64-bit edition version of the USB driver

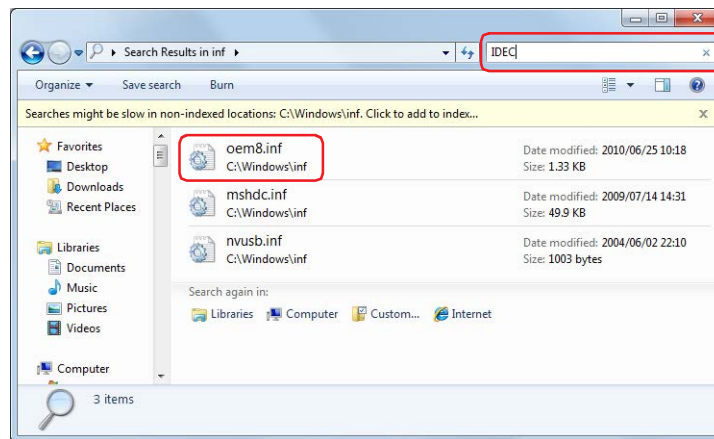
The Windows 10/8/7 64-bit edition version of the USB driver cannot be completely uninstalled even if you delete the USB driver **IDEC USB CDC ACM.(XXXX)** (where XXXX is the port name) from Device Manager. Follow these steps to delete all USB driver files to uninstall it completely, then reinstall it.

- 1 Launch Windows Explorer.



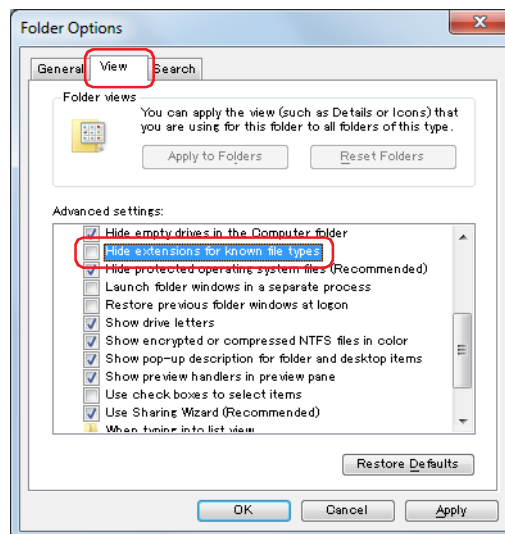
- 2 Click **Computer**, **C:**, **Windows** , and then **inf**.

- 3 Enter **IDEC** in the search box.
The file oem*.inf (** denotes a number) will appear.



If the file extension is not displayed, change the display settings as follows.

- (1) The **Folder Options** dialog box is displayed.
 - Windows 10/8
On the **View** menu, click **Options**.
 - Windows 7
Click **Organize - Folder and Search Options**.
- (2) On the **View** tab, deselect **Hide extensions for known file types**.



- (3) Click **OK**.

4 Delete oem**.inf.

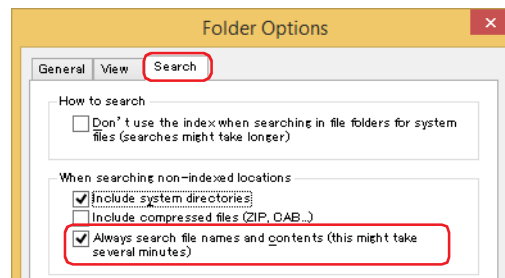
Right Click on oem**.inf, and then click **Delete** or press DELETE on the keyboard.

The File Access Denied dialog box appears.

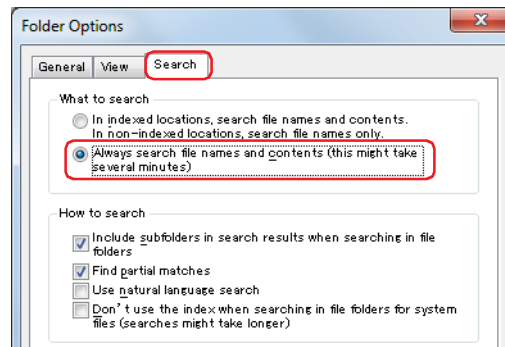


If Windows cannot find oem**.inf, change the settings as follows.

- (1) The **Folder Options** dialog box is displayed.
 - Windows 10/8
On the **View** menu, click **Options**.
 - Windows 7
Click **Organize - Folder and Search Options**.
- (2) Select the search method.
 - Windows 10/8
On the **Search** tab, click **Always search file names and contents** under **When searching non-indexed locations**.

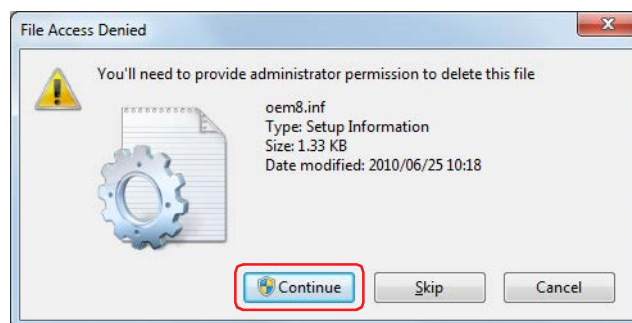


- Windows 7
On the **Search** tab, click **Always search file names and contents** under **What to search**.



- (3) Click **OK**.

5 Click **Continue**.

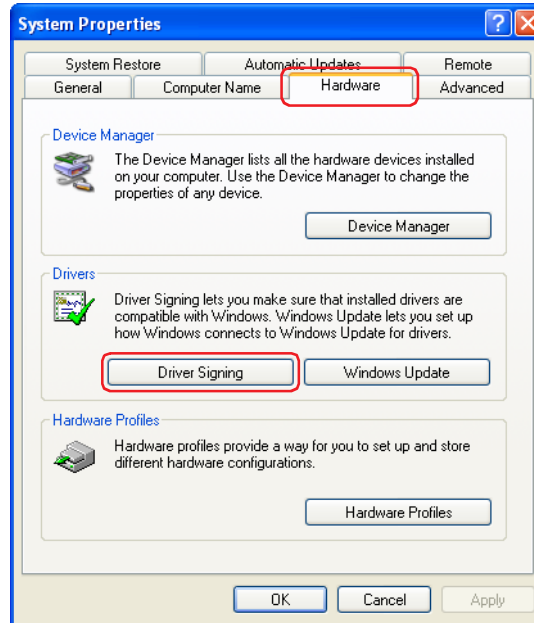


6 This will reinstall the USB driver.

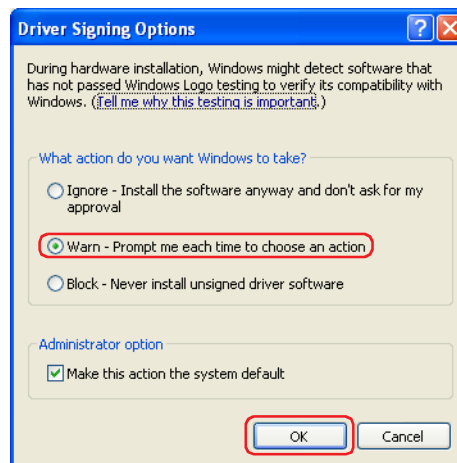
Changing driver signing options

If the USB driver installation stops before it is complete, follow these steps to check the driver signing options.


- 1 Click the **Start** button, **Control Panel**, **Performance and Maintenance**, and then **System**.
The System Properties dialog box is displayed.
- 2 Click **Driver Signing** on the **Hardware** tab.



- 3 Select **Warn** under the label **What action do you want Windows to take?**, and then click **OK**.



If **Block** is selected, the Hardware Installation dialog box is not displayed and installation stops.

- 4 Click **OK** on the System Properties dialog box.
- 5 Click  (Close) on the Control Panel.



To reinstall the USB driver, disconnect the USB cable from the USB interface on the Touch and from the USB port on the computer. Reinstall by referring to "Changing driver signing options".

Checking the USB Driver

Follow these steps to confirm that the USB driver was installed properly, and that the computer recognizes Touch correctly.

1 Call up Device Manager.

■ **Windows 10**

Type **Device Manager** in the Searchbox on the taskbar, and then select from the menu.

■ **Windows 8**

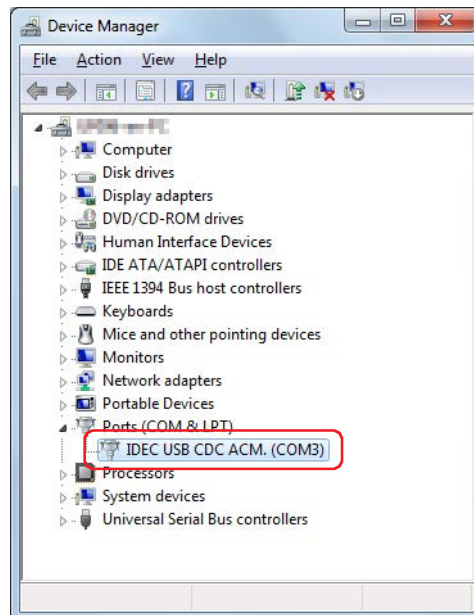
Right Click on the **Start** screen and then click **All Apps, Control Panel**, and **Hardware and Sound**. In the **Hardware and Sound** dialog box, click **Device Manager**.

■ **Windows 7**

Click the **Start** button, **Control Panel, System and Security**, and then **Device Manager**.

2 Click **Ports (COM & LPT)**.

If "IDEC USB CDC ACM.(XXXX)" (XXXX is the port name) is displayed as the device name, the USB driver is already installed and the computer recognizes the Touch.



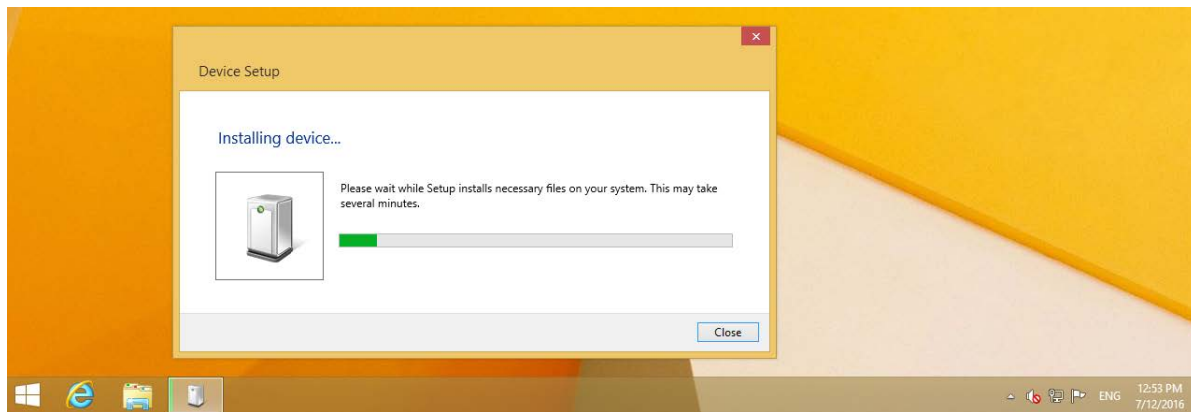
- The device name will disappear if the USB cable is disconnected or the Touch power is turned off.
- When the Touch power is turned on and the USB cable is connected, the words **Unknown Device** or a **?** may appear in place of the device name, indicating the computer may not be recognizing the USB driver correctly. Disconnect the USB cable and turn the Touch power off. Then turn the Touch power on again and connect the USB cable to check that the computer recognizes the USB driver. If the computer still does not recognize the USB driver, uninstall it from Device Manager and reinstall it.

USB Driver Installation Procedure (PLC)

How to install the USB driver required when connecting the PLC to the computer is described.

● Installing on Windows 10, Windows 8

- 1 Connect a USB cable to the USB port on the PLC with the power supplied and the computer running.
- 2 An icon is displayed in the taskbar. Click to display the progress dialog.

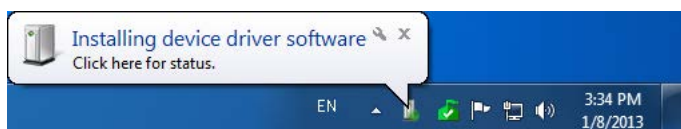


Progress dialog box does not appear if USB driver is already installed.

- 3 When the installation is complete, the icon in the taskbar automatically disappears. The installation is completed.

● Installing on Windows 7

- 1 Connect a USB cable to the USB port on the PLC with the power supplied and the computer running.
- 2 The following message appears in the bottom right corner of the desktop.



- 3 The installation is complete once the message "Your device is ready to use" appears in the bottom right corner of the desktop.